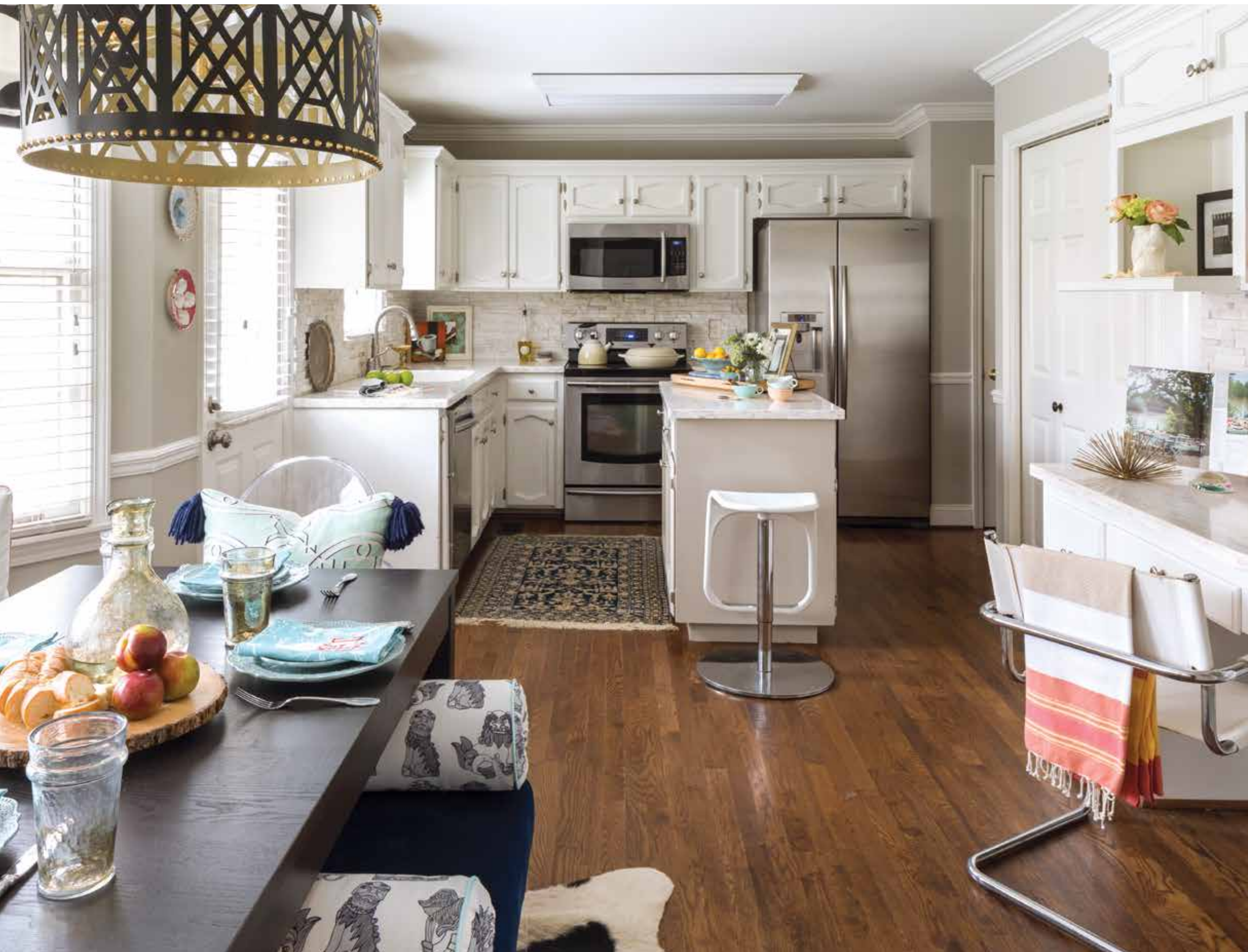




## A Modern Touch

FABRIC DESIGNER MARY CATHERINE FOLMAR USES A COMBINATION OF TEXTURE AND FUN POPS OF COLOR TO DRESS HER KITCHEN FOR THE SEASON.





Mary Catherine Folmar and her husband, Tyler, renovated their kitchen about seven years ago when they first moved into their house. Mary Catherine says, “I love a white kitchen; it’s light, bright, and clean. And since this kitchen was not so big, having it light makes it seem more open.” They kept the hardwood floors, staining them dark to contrast with the walls and cabinets. Corian, a solid surface material, was chosen for the countertops and the top of the island. Mary Catherine loves the look of marble, and the Corian pattern White Dove accomplishes that look and feel without the worry of the high-maintenance natural stone. For the backsplash, however, she decided to go with tumbled marble, thinking stains would be less likely.





The bench above is covered in Cotton & Quill velvet and topped with pillows from the company. To make the task of doing laundry more enjoyable, Mary Catherine decided she would give the space an upgrade. She added travertine tile and a wallpaper from Cotton & Quill. Now, every time she opens the door, she smiles.



Cabinets line two walls of the room, but she says, “I couldn’t live without the island. It has so much storage.” The couple cooks all the time, and storage is definitely a priority. A built-in desk provides a command center for paperwork, and a large closet is a laundry hideaway, making it easy to multitask when working in the kitchen.

Within two years of moving into the house, Mary Catherine embarked on a new business venture. She says, “I love interiors, I love fashion, and I love graphics.” That combination of interests and her college studies in industrial design inspired her to start Cotton & Quill, a fabric and wallpaper company. Her designs have a modern but classic look, and some are more playful than others. The fabric used at the kitchen windows is an example. Titled Grande French 75, the pattern was inspired by classic Champagne coupe glasses. Stacked end to end, they make a strong graphic design. Mary Catherine first used the fabric for kitchen drapes, but living with two dogs, she soon discovered drapes weren’t very practical, so she cut them to make roman shades.

The table was a long-ago purchase from IKEA while the chandelier is a new piece from Taylor Burke Home, an example of successfully mixing high- and low-end pieces within a room. The acrylic ghost chairs at the table’s ends are dressed with Cotton & Quill pillows that are changed out with the season. Mary Catherine says that neutral walls are her blank canvas, so she can add a pop of color and change with the seasons without really making a commitment.

When asked what she loves most about her kitchen, Mary Catherine says it has to be the breakfast area. “Black-and-white tile is used in the foyer, and then, when you look straight ahead down the hall, you see the black and white repeated in the breakfast area, adding a modern touch to my otherwise traditional home. And I think it’s so fun.” 🌸

---

Photography by Marcy Black Simpson  
Styling by Yukie McLean